

# CLAMPING INNOVATION

## Manual Clamping and Workholding Solutions

### Introducing the newest additions to the family of Heavy-Duty Straight-Line Action Clamps

We've added the DE-STA-CO Toggle-Lock Plus functionality to the 640 and 640-M Models.

This patented safety feature positively locks the clamp linkage in the extended and retracted positions. When engaged, unintentional opening and closing is restricted.

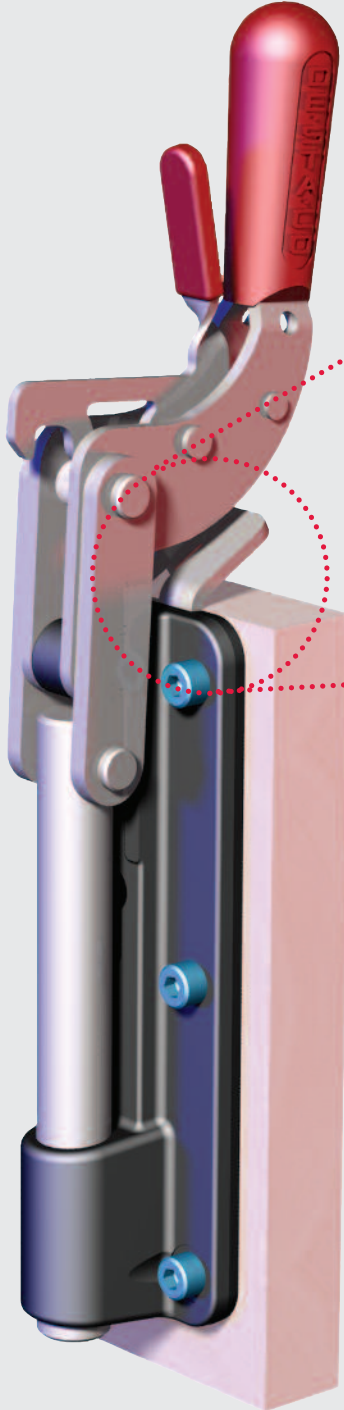
**DE-STA-CO® Toggle Lock Plus** locks in both extended **and** retracted position

**Over-Center Toggle Lock Mechanism** in extended and retracted positions

**Designed for Heavy-duty Service**  
7500 lbf [33.4kN] Hold Capacity

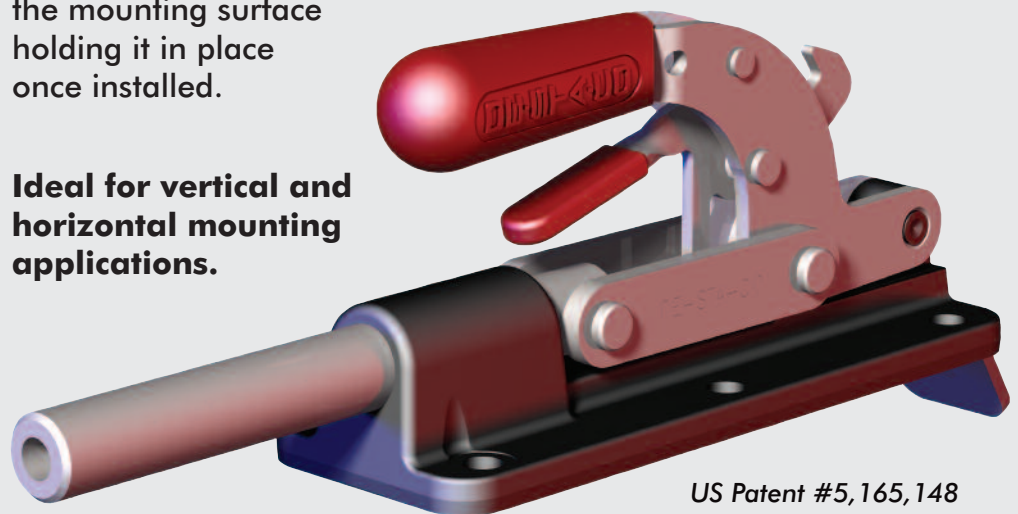
**Full 4.00" [101.6mm] of plunger travel**

**Ergonomic Handle**



**Latch plate** for the retracted position is recessed and keyed inside the base, with the mounting surface holding it in place once installed.

**Ideal for vertical and horizontal mounting applications.**

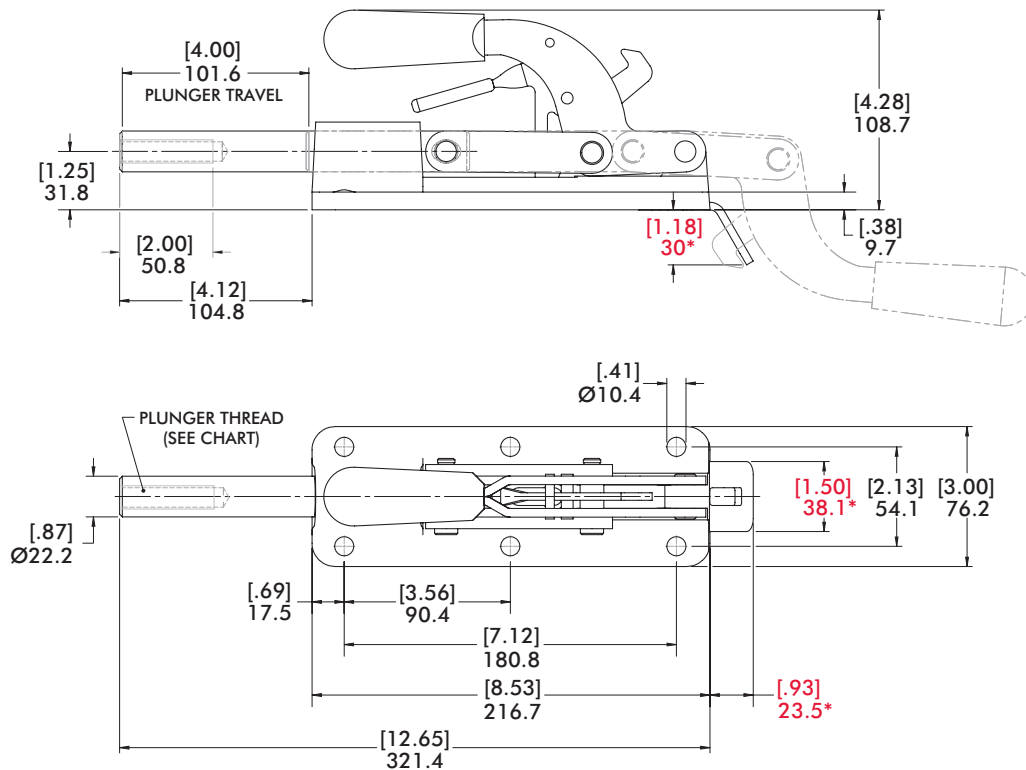
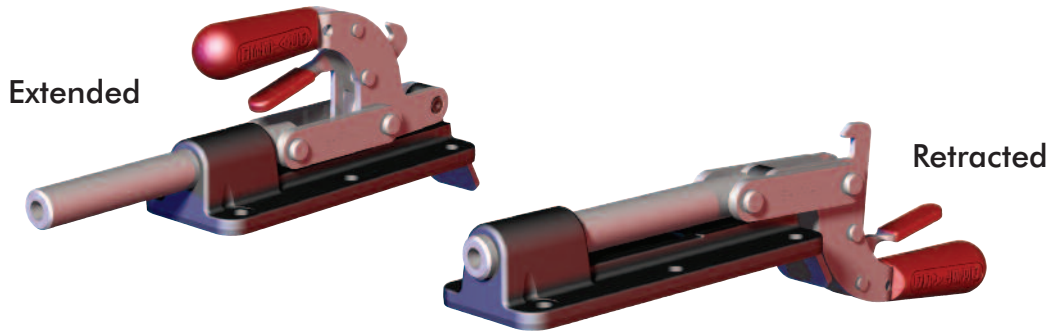


US Patent #5,165,148



# Heavy-Duty Straight Line Action Clamps

## 640-R/640-MR Straight-line Action Clamps with DE-STA-CO® Toggle Lock Plus



(\* Dimensions above in **RED** applies to the **640-R/640-MR** only

MODEL	HOLDING CAP.	UNIT WEIGHT	MAX MECH ADV	PLUNGER TRAVEL	PLUNGER THREAD
<b>NEW</b> 640-R	[7500 lbf] 33.4kN	[6.91 lb] 3.13kg	35:1	[4.00] 101.6	½-13
<b>NEW</b> 640-MR					M12 x 1.75
640					½-13
640-M		[6.78 lb] 3.08kg			M12 x 1.75