

Latching on to a good idea... ...is all in the Release

Introducing the newest additions to the DE-STA-CO® Toggle Lock Plus Line Up

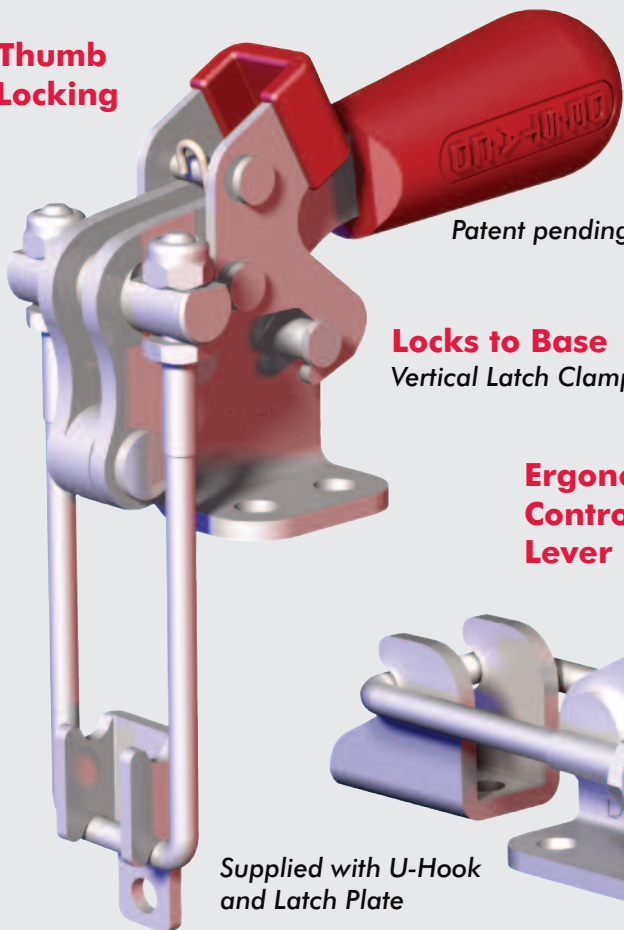
Ergonomic Handle

Ergonomic Thumb Controlled Locking Lever

Patent pending

Over-Center Toggle Lock Mechanism

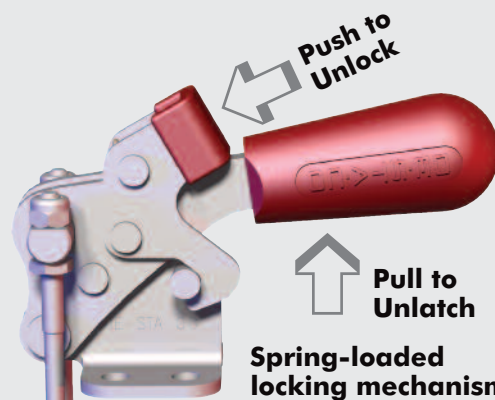
Durable Carbon Steel Construction



Locks to Base Vertical Latch Clamp

Supplied with U-Hook
and Latch Plate

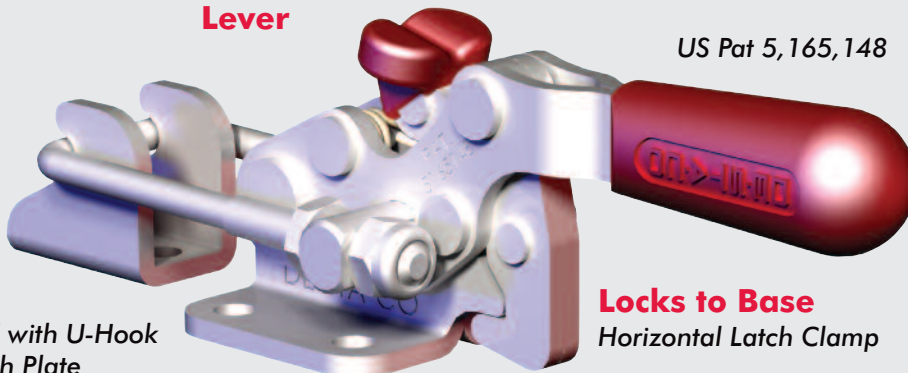
DE-STA-CO® Toggle Lock Plus



Spring-loaded locking mechanism

Ergonomic Thumb Controlled Locking Lever

US Pat 5,165,148

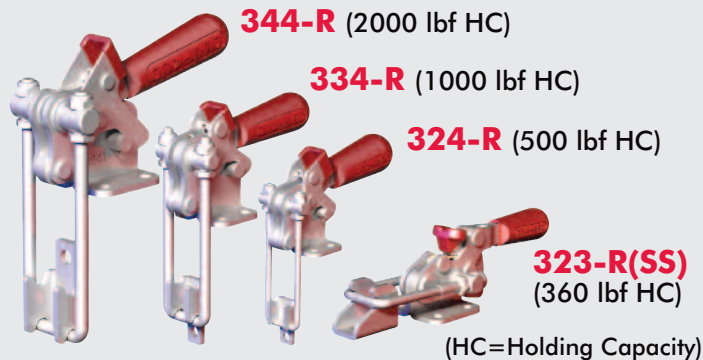


Locks to Base Horizontal Latch Clamp

Applications: Ideal for quick clamping for the closures of covers and flaps on rotating or stationary containers, drums, boxes and molds - or for any application where the possibility of unintentional opening exists due to vibration or abrupt movement.

Industries: Transportation, Aerospace, Automotive, Military/Defense, Industrial and Consumer Products

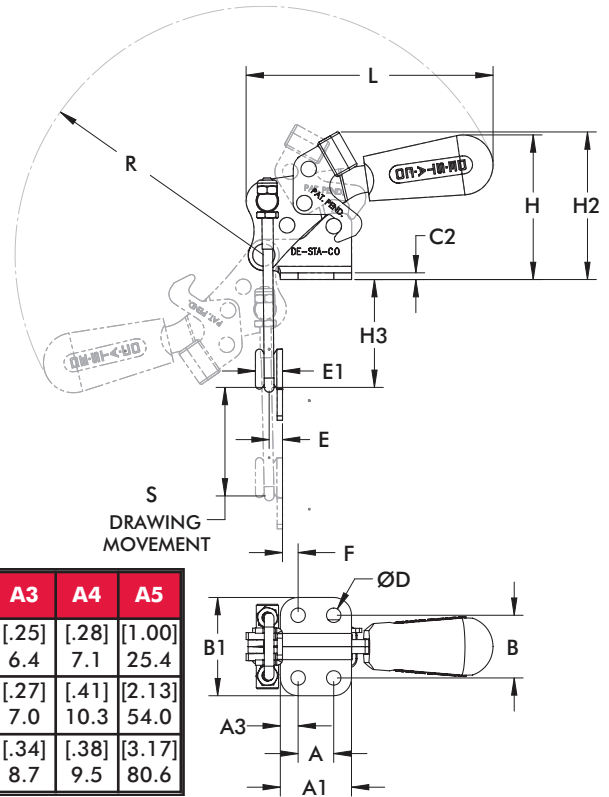
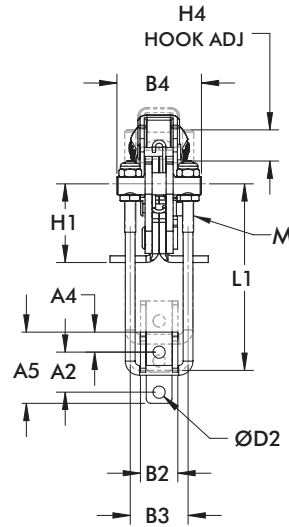
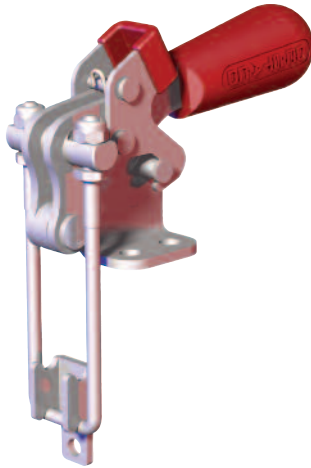
Four Models Available



A DOVER COMPANY

DE-STA-CO® Toggle Lock Plus Latch Clamps

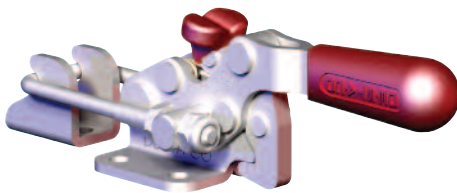
DE-STA-CO® Toggle Lock Plus Vertical Latch Clamp



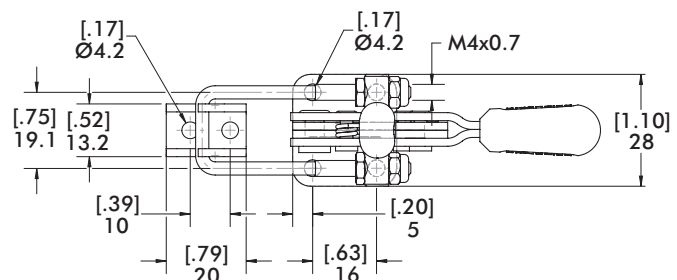
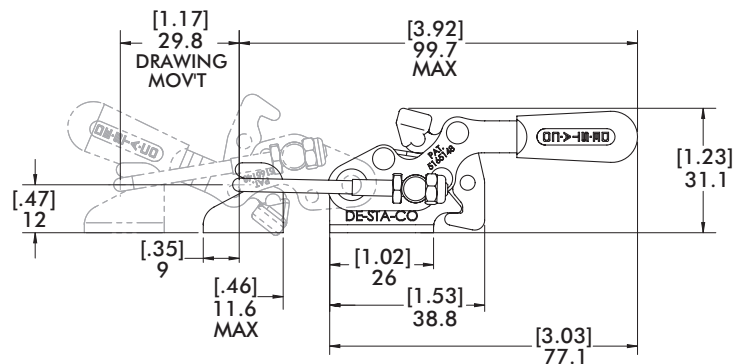
MODEL	HOLDING CAP.	UNIT WEIGHT	MECH ADV	A	A1	A2	A3	A4	A5
324-R	[500 lbf] 2.22kN	[0.25 lb] 113.4g	31:1	[.50] 12.7	[1.00] 25.4	[.56] 14.3	[.25] 6.4	[.28] 7.1	[1.00] 25.4
334-R	[1,000 lbf] 4.49kN	[0.60 lb] 272.2g	31:1	[.75] 19.1	[1.38] 34.9	[.81] 20.6	[.27] 7.0	[.41] 10.3	[2.13] 54.0
344-R	[2000 lbf] 8.90kN	[1.50 lb] 680.4g	45:1	[1.31] 33.3	[1.94] 49.1	[1.06] 27.0	[.34] 8.7	[.38] 9.5	[3.17] 80.6

MODEL	B	B1	B2	B3	B4	C2	D	D2	E	E1	F	H	H1	H2	H3	H4	L	L1	M	S	R
324-R	[.88] 22.4	[1.38] 35.1	[.52] 13.3	[.81] 20.6	[.44] 11.1	[.09] 2.4	[.20] 5.2	[.17] 4.4	[.20] 5.2	[.17] 4.4	[.22] 5.6	[2.03] 51.6	[1.11] 28.1	[2.07] 52.7	[1.52] 38.5	[.44] 11.1	[3.47] 88.1	[2.62] 66.6	M4	[1.53] 38.7	[3.49] 88.8
334-R	[1.00] 25.4	[1.56] 39.6	[.68] 17.3	[1.13] 28.6	[1.63] 41.3	[.12] 3.1	[.28] 7.1	[.22] 5.6	[.35] 8.8	[.63] 15.9	[.18] 4.5	[2.37] 60.2	[1.55] 39.3	[2.55] 64.7	[2.22] 56.3	[.86] 21.8	[4.12] 104.6	[3.76] 95.6	M6	[2.04] 51.7	[4.10] 104.2
344-R	[1.44] 36.6	[2.13] 54.0	[1.20] 30.6	[1.75] 44.5	[2.38] 60.5	[.16] 4.0	[.34] 8.6	[.34] 8.7	[.50] 12.7	[.94] 23.9	[.36] 9.1	[3.39] 86.2	[1.86] 47.3	[3.39] 86.0	[3.17] 80.8	[1.17] 29.6	[5.77] 146.5	[5.04] 128.0	M8	[2.46] 62.4	[5.83] 148.1

DE-STA-CO® Toggle Lock Plus Horizontal Latch Clamp



323-R = Carbon Steel
323-RSS = Stainless Steel



MODEL	HOLDING CAP.	UNIT WEIGHT	MECH ADV
323-R(SS)	[360 lbf] 1.60kN	[.15 lb] 68.0g	27:1