

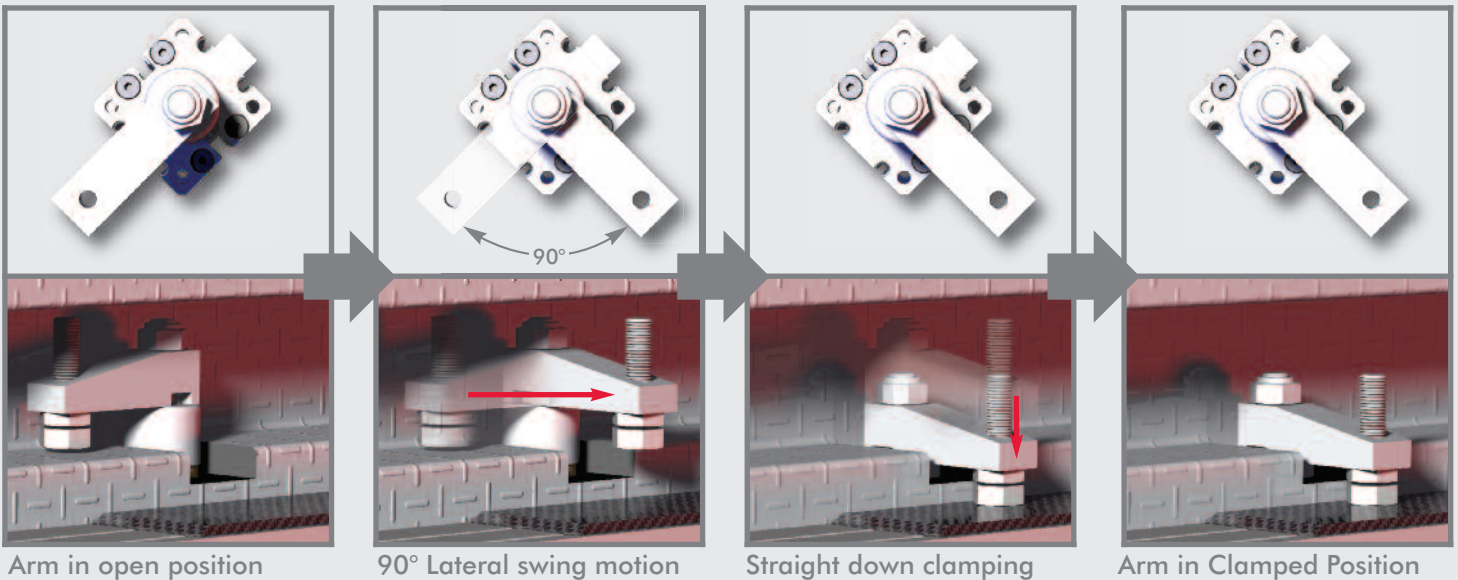
SWING INTO A TIGHT SPOT

9500 Series Pneumatic Swing Clamp

The only swing clamp to offer a patented movement with a robust arm connection and rod protection...all in one package.

No downward travel during 90° swing

Arm does not move down or up during 90° rotation as shown below, requiring less clearance during arm swing. This allows for operation in restricted or confined work spaces.



Versatile arm connection accepts 90° Slot Style Arm (shown, ordered separately) or 360° Radially Adjustable Pinch-on Style Arm

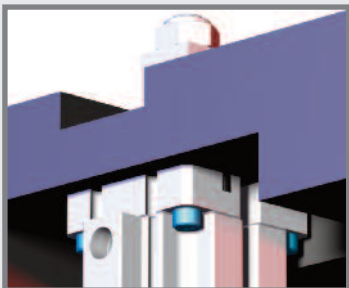
Rod Cover Standard



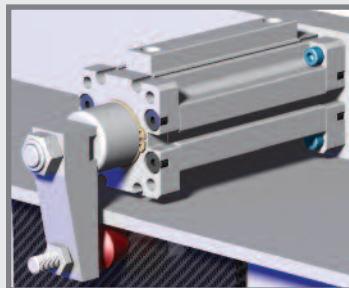
Fixed Orifice Porting does not require flow controls

Switch Grooves for either Ø4mm or 6.5 x 5mm switches (magnet on piston)

Vertical or Horizontal Mounting



Vertical Mounting

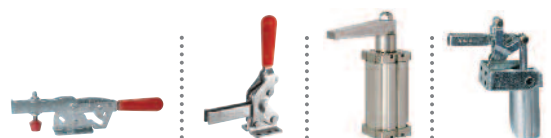


Horizontal Mounting

9500 Series is offered in (2) Models/Sizes

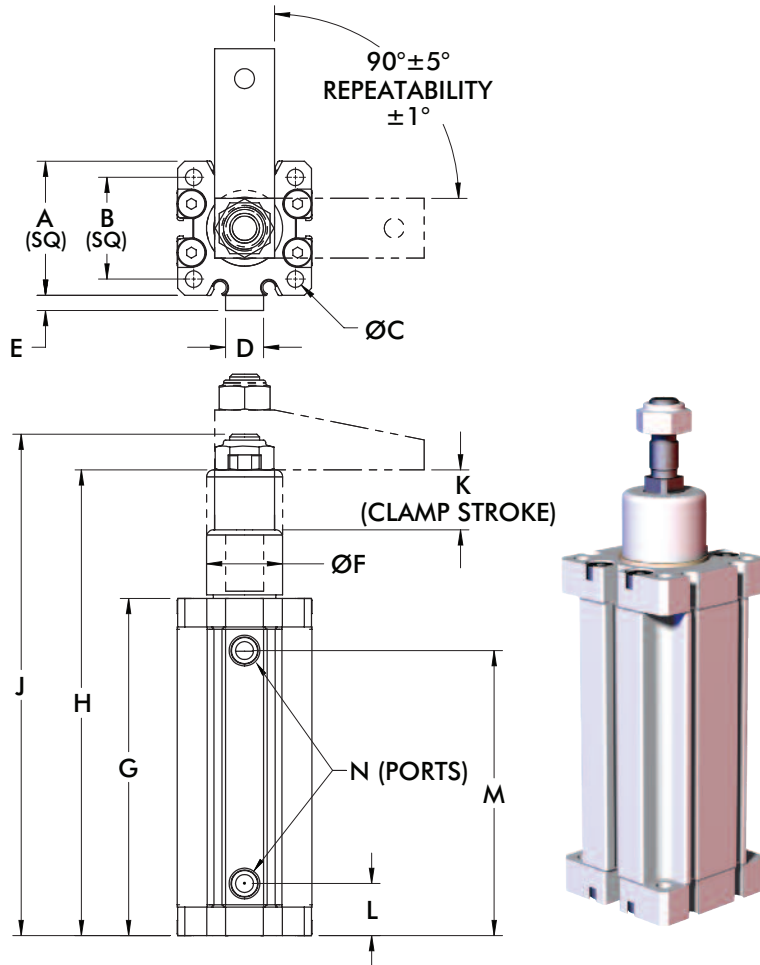


A DOVER COMPANY



9500 Series Pneumatic Swing Clamp

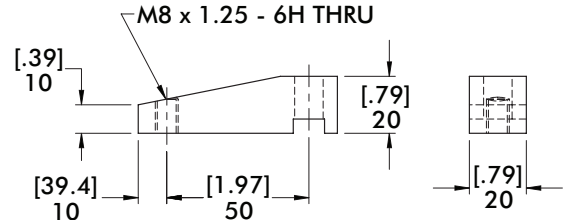
9530/9540 Dimensions and Technical Information



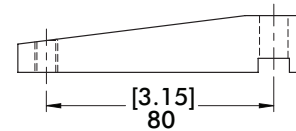
Clamp Arm Options (Ordered Separately)

These clamp arms can be mounted to the piston rod in 90° increments and can be used on both series

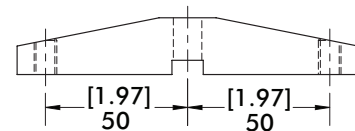
954050 2.00 in. Arm



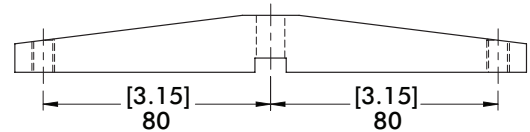
954053 3.00 in. Arm



954054 2.00 in. "T" Arm



954055 3.00 in. "T" Arm



9530 SERIES		
MODEL	Swing Direction	N
9530R	Right	1/8
9530L	Left	NPT
9530GR	Right	G-1/8
9530GL	Left	

9530/9540 SWING CLAMP DIMENSIONS													
SERIES	A	B	C	D	E	F	G	H	J	K	L	M	
9530	[1.76]	[1.34]	[.22]	[.50]	[.20]	[1.00]	[4.44]	[6.13]	[6.59]	[.79]	[17.4]	[3.75]	
	44.7	34	5.5	12.7	5.1	25.4	112.7	155.7	167.3	20	17.4	95.3	
9540	[2.05]	[1.57]	[.22]	[.63]	[.35]	[1.14]	[4.78]	[6.50]	[6.94]	[.79]	[.84]	[3.97]	
	52	40	5.5	16	9	29	121.4	165	176.2	20	21.3	100.8	

9540 SERIES		
MODEL	Swing Direction	N
9540R	Right	1/8
9540L	Left	NPT
9540GR	Right	G-1/8
9540GL	Left	

